

WSLP2000 HOLDING TANK SPECIFICATIONS

DIMENSIONS:

WALL: 3"
 BOTTOM: 5"
 COVER: 6"
 MANHOLE: 24" I.D. PRECAST CONCRETE RISER
 HEIGHT: 46 1/4"
 LENGTH: 15'-4"
 WIDTH: 8'-6"
 BELOW INLET: 34"
 LIQUID LEVEL: 29"
 WEIGHT: BOTTOM 14,530 LBS.
 COVER 9,300 LBS.

INLET AND OUTLET:

4" CAST-A-SEAL BOOT OR EQUAL GASKET

LIQUID CAPACITY: 69.77 GAL/IN

HOLDING TANK:

NO OUTLET HOLE
 ACTUAL CAPACITY: 2,020 GALLONS

LOADING DESIGN: 8'-0" UNSATURATED SOIL

TANK CAN BE USED AS:

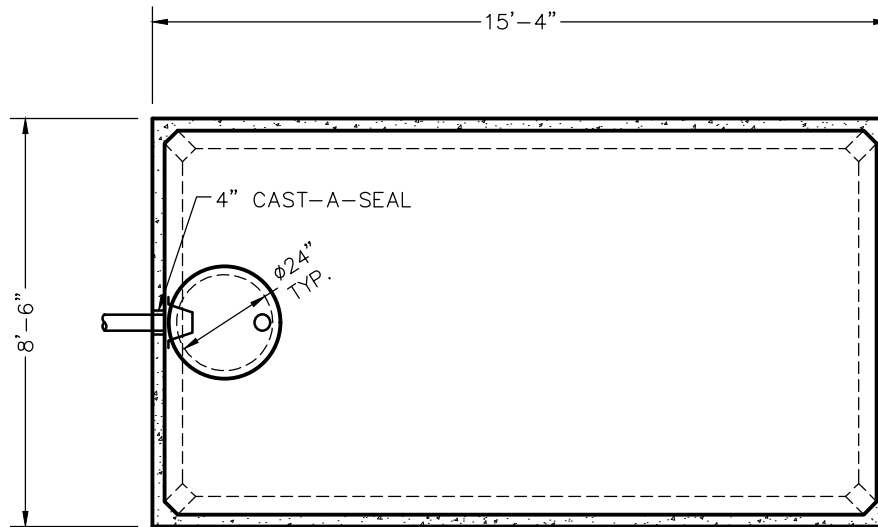
HOLDING / PUMP

COVER: MIX DESIGN #8 (NO FIBER)

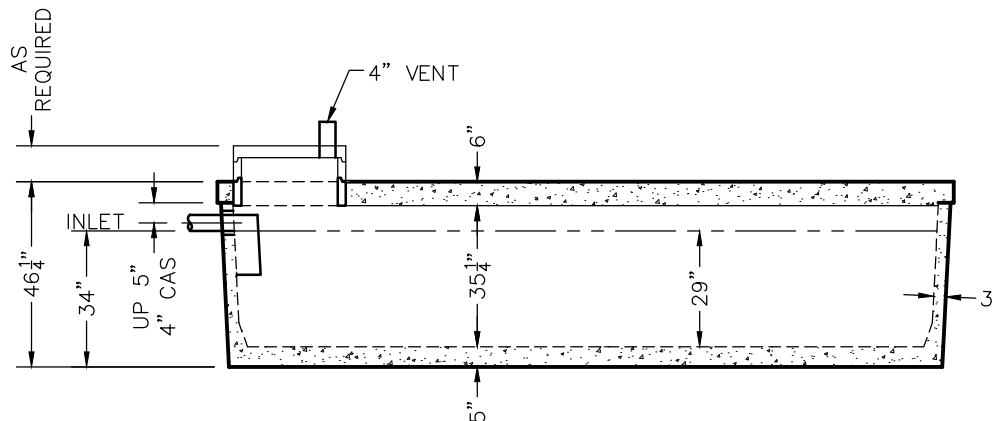
TANK: MIX DESIGN #9 (SMALL FIBER)

CUSTOMIZED TANKS:

FOR CUSTOM TANKS CONTACT WIESER CONCRETE



TOP VIEW



SIDE VIEW

TANKS ARE MANUFACTURED TO MEET OR EXCEED ASTM C-1227 REQUIREMENTS

REVIEWED BY _____
 REVIEW DATE _____

**DRAWINGS SUBMITTED
FOR APPROVAL**

APPROVED BY: _____
 APPROVAL DATE: _____
 PRODUCTS NEEDED BY: _____

| | | | | | | | | | | | | | |
|------------|--|-------|--|------|--|---------------------|--|---------------|--|----------------|--|------------------------|--|
| PRE-POUR: | | DATE: | | REV. | | SCALE: 1/4" = 1'-0" | | DRAWN BY: WCP | | DATE: 00/00/00 | | FILE: wslp2000 holding | |
| POST-POUR: | | | | | | | | | | | | | |

WIESER CONCRETE
 W3716 US HWY 10, MAIDEN ROCK, WI 54750
 800-325-8456

WSLP2000 HOLDING
 SEPTIC MANUAL

SHEET NO.
 1 OF 1