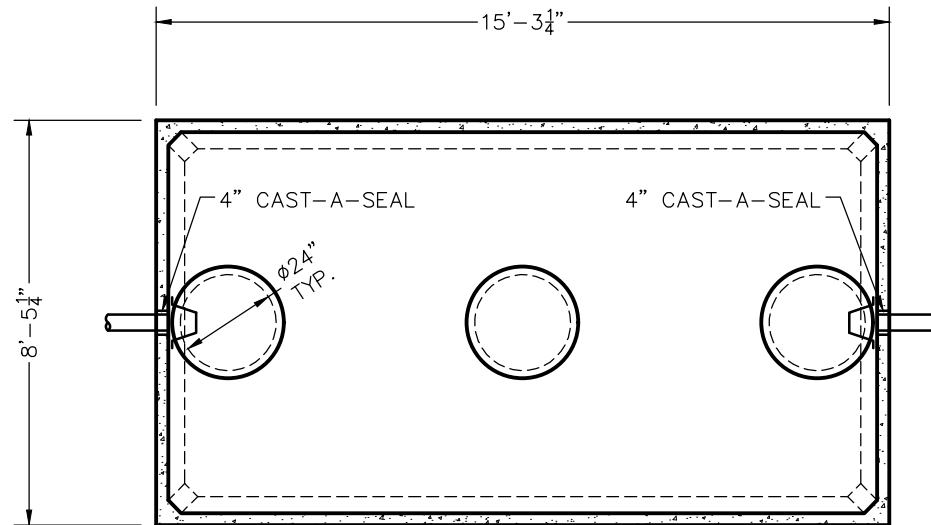
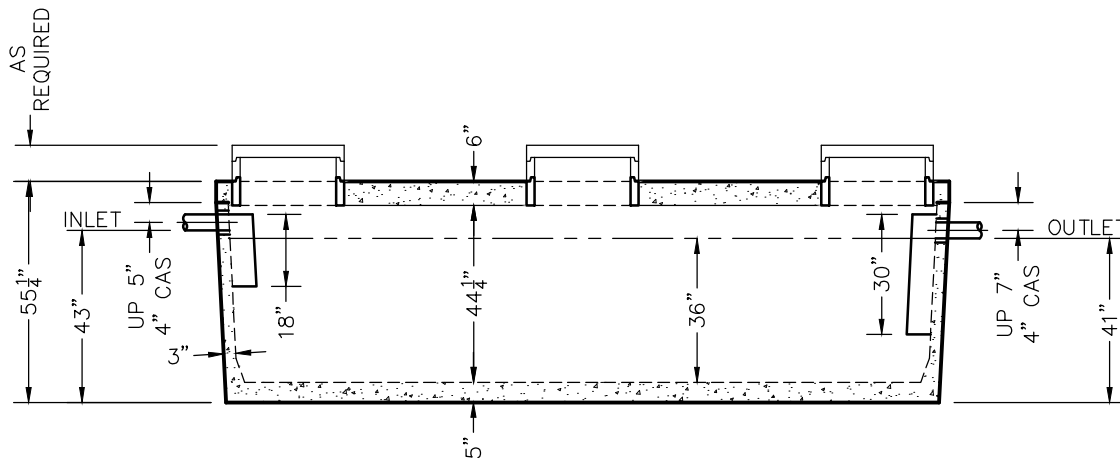


WLP2500 GREASE INTERCEPTOR TANK SPECIFICATIONS



TOP VIEW



SIDE VIEW

DIMENSIONS:

WALL: 3"
 BOTTOM: 5"
 COVER: 6"
 MANHOLE: 24" I.D. PRECAST CONCRETE RISER
 HEIGHT: 55 1/4"
 LENGTH: 15'-3 1/4"
 WIDTH: 8'-5 1/4"
 BELOW INLET: 43"
 LIQUID LEVEL: 36"
 WEIGHT: BOTTOM 15,527 LBS.
 COVER 9,300 LBS.

INLET AND OUTLET:

4" CAST-A-SEAL BOOT OR EQUAL GASKET

INLET AND OUTLET BAFFLE AND FILTER:
 AS SHOWN

LIQUID CAPACITY: 69.44 GAL/IN

LOADING DESIGN: 8'-0" UNSATURATED SOIL

TANK CAN BE USED AS:
 GREASE INTERCEPTOR

COVER: MIX DESIGN #8 (NO FIBER)
 TANK: MIX DESIGN #9 (SMALL FIBER)

CUSTOMIZED TANKS:
 FOR CUSTOM TANKS CONTACT WIESER CONCRETE

REVIEWED BY _____
 REVIEW DATE _____

**DRAWINGS SUBMITTED
 FOR APPROVAL**

APPROVED BY: _____
 APPROVAL DATE: _____
 PRODUCTS NEEDED BY: _____

TANKS ARE MANUFACTURED TO MEET OR EXCEED ASTM C-1227 & C-1613 REQUIREMENTS

PRE-POUR:	
POST-POUR:	
DATE:	
REV.	
SCALE: 1/4" = 1'-0"	
DRAWN BY: WCP	
DATE: 00/00/00	
FILE: wlp2500gi	

WIESER CONCRETE
 W3716 US HWY 10, MAIDEN ROCK, WI 54750
 800-325-8456

WLP2500GI
 SEPTIC MANUAL

SHEET NO.
 1 OF 1