

# WLP2000-P GREASE INTERCEPTOR TANK SPECIFICATIONS

## DIMENSIONS:

WALL: 3"  
 BOTTOM: 3"  
 COVER: 6"  
 MANHOLE: 24" I.D. PRECAST CONCRETE RISER  
 HEIGHT: 53" O.D.  
 LENGTH: 13'-8" O.D.  
 WIDTH: 8'-0" O.D.  
 BELOW INLET: 41" O.D.  
 LIQUID LEVEL: 36"  
 WEIGHT: BOTTOM 15,295 LBS.  
 COVER 8,205 LBS.

INLET AND OUTLET:  
 4" CAST-A-SEAL BOOT OR EQUAL GASKET

INLET AND OUTLET BAFFLES:  
 AS SHOWN

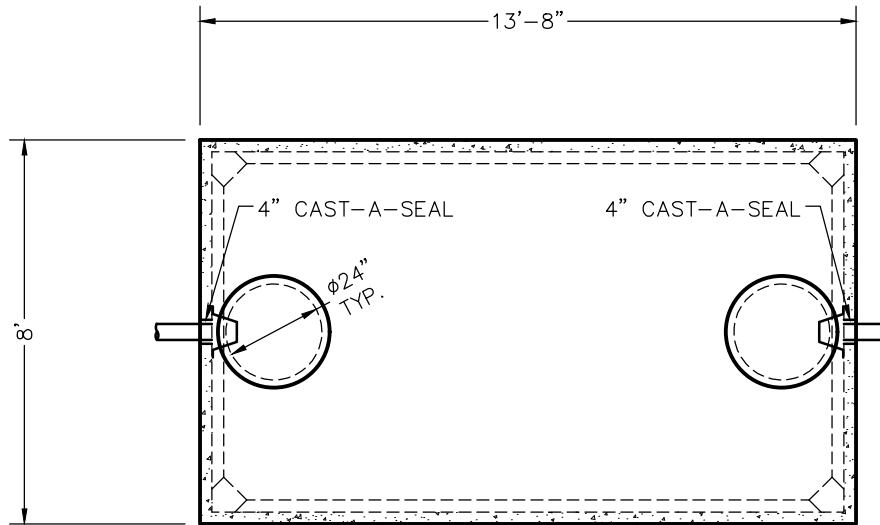
LIQUID CAPACITY: 56.27 GAL/IN

LOADING DESIGN: 8'-0" UNSATURATED SOIL

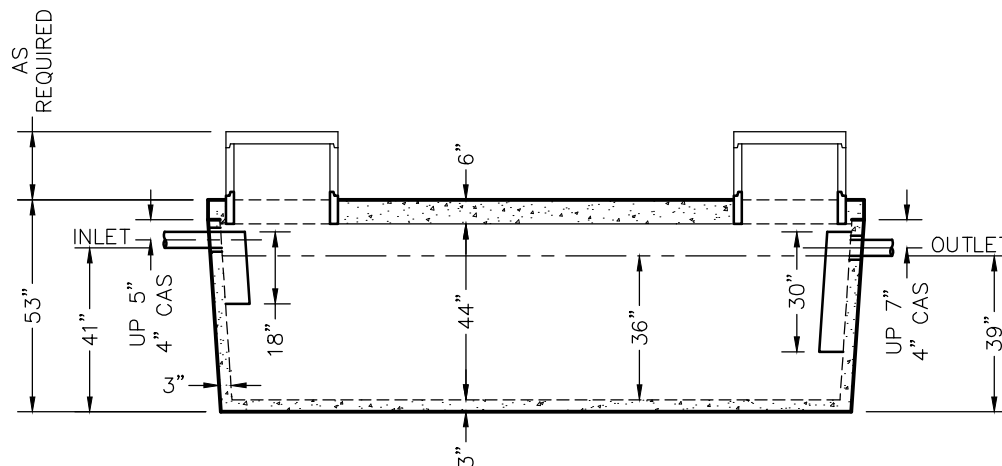
TANK CAN BE USED AS:  
 GREASE INTERCEPTOR

COVER: MIX DESIGN #8 (NO FIBER)  
 TANK: MIX DESIGN #10 (SMALL FIBER)

CUSTOMIZED TANKS:  
 FOR CUSTOM TANKS CONTACT WIESER CONCRETE



TOP VIEW



SIDE VIEW

TANKS ARE MANUFACTURED TO MEET OR EXCEED ASTM C-1227 & C-1613 REQUIREMENTS

REVIEWED BY \_\_\_\_\_  
 REVIEW DATE \_\_\_\_\_

**DRAWINGS SUBMITTED  
FOR APPROVAL**

APPROVED BY: \_\_\_\_\_  
 APPROVAL DATE: \_\_\_\_\_  
 PRODUCTS NEEDED BY: \_\_\_\_\_

SHEET NO.  
 1 OF 1

WLP2000GI-P  
 SEPTIC MANUAL

**WIESER CONCRETE**  
 W3716 US HWY 10, MAIDEN ROCK, WI 54750  
 800-325-8456

SCALE: 1/4" = 1'-0"  
 DRAWN BY: WCP  
 DATE: 00/00/00  
 FILE: wlp2000gi-p  
 PRE-POUR: \_\_\_\_\_  
 POST-POUR: \_\_\_\_\_  
 REV. \_\_\_\_\_  
 DATE: \_\_\_\_\_