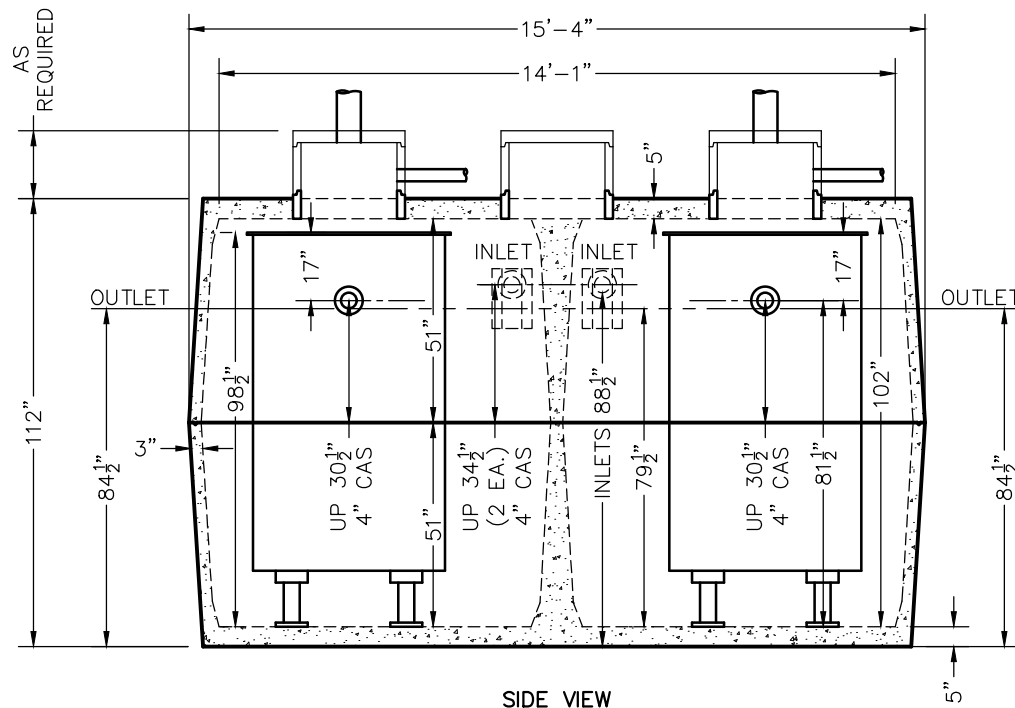


TOP VIEW



SIDE VIEW

W6010 BIO (2) 3000 GPD MICROFAST® 3.0 OR HIGH STRENGTH FAST® 3.0 TANK SPECIFICATIONS

DIMENSIONS:

WALL: 3"
 BOTTOM: 5"
 COVER: 5"
 MANHOLE: 24" I.D. PRECAST CONCRETE RISER
 HEIGHT: 112" O.D.
 LENGTH: 15'-4" O.D.
 WIDTH: 8'-6" O.D.
 BELOW INLET: 88 1/2" O.D.
 LIQUID LEVEL: 79 1/2"
 WEIGHT: 15,050 LBS. PER SECTION

INLET AND OUTLET:

4" CAST-A-SEAL BOOT OR EQUAL GASKET

INLET AND OUTLET BAFFLE:

AS SHOWN

LIQUID CAPACITY: 70.71 GAL/IN

LOADING DESIGN: 8'-0" UNSATURATED SOIL

TANK: MIX DESIGN #9 (SMALL FIBER)

CUSTOMIZED TANKS:

FOR CUSTOM TANKS CONTACT WIESER CONCRETE

REVIEWED BY _____
 REVIEW DATE _____

**DRAWINGS SUBMITTED
 FOR APPROVAL**

APPROVED BY: _____
 APPROVAL DATE: _____
 PRODUCTS NEEDED BY: _____

TANKS ARE MANUFACTURED TO MEET OR EXCEED ASTM C-1227 REQUIREMENTS

SCALE: 1/4" = 1'-0"	REV.	DATE:
DRAWN BY: WCP		
DATE: 00/00/00		
FILE: w6010 bio hs fast (2) 3000		

WIESER CONCRETE
 W3716 US HWY 10, MAIDEN ROCK, WI 54750
 800-325-8456

W6010 BIO HS FAST (2)
 3000

SEPTIC MANUAL

SHEET NO.
 1 OF 1