

W5140 HOLDING TANK SPECIFICATIONS

DIMENSIONS:

WALL: 3"
 BOTTOM: 5"
 COVER: 5"
 MANHOLE: 24" I.D. PRECAST CONCRETE RISER
 HEIGHT: 98 1/2"
 LENGTH: 13'-8"
 WIDTH: 8'-0"
 BELOW INLET: 89"
 LIQUID LEVEL: 84"
 WEIGHT: 13,200 LBS. PER SECTION

INLET AND OUTLET:
 4" CAST-A-SEAL BOOT OR EQUAL GASKET

LIQUID CAPACITY: 58.85 GAL/IN

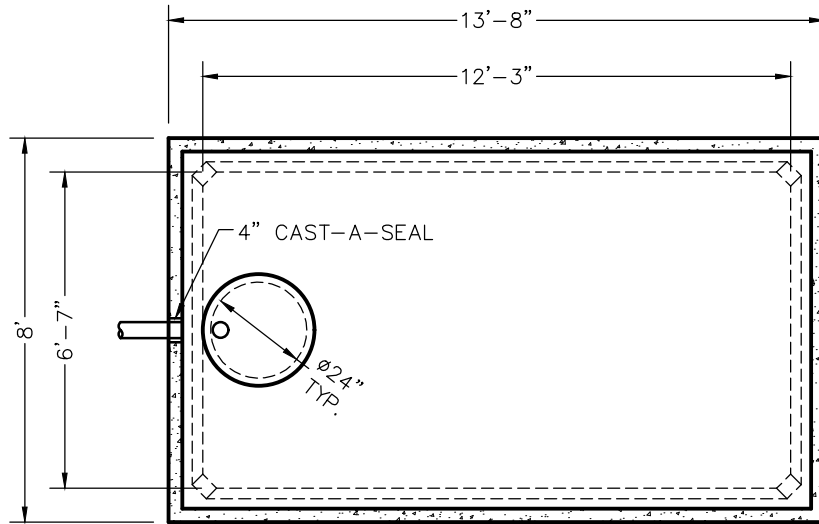
HOLDING TANK:
 NO OUTLET HOLE
 ACTUAL CAPACITY: 5,140 GALLONS

LOADING DESIGN: 8'-0" UNSATURATED SOIL

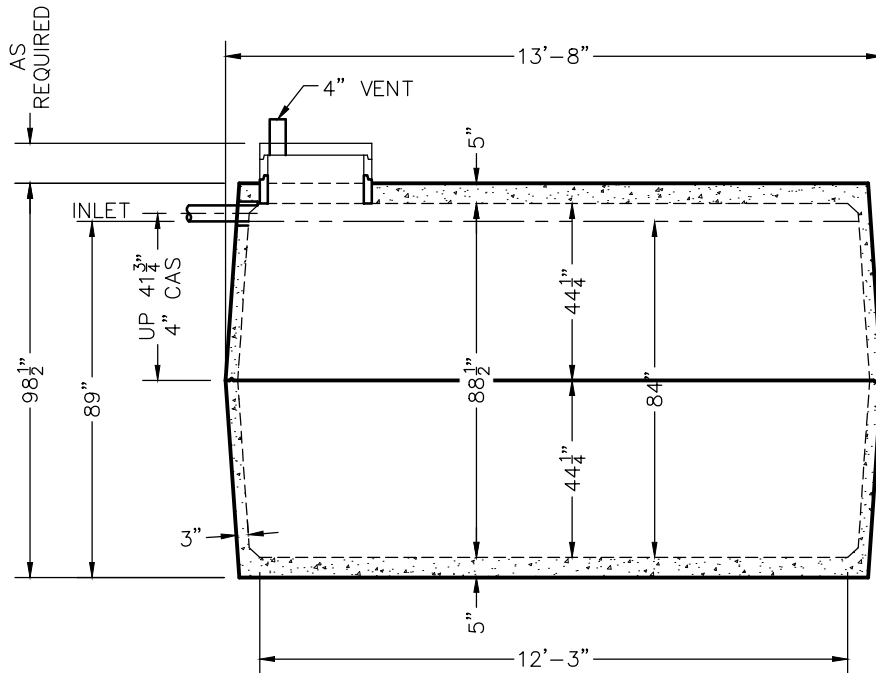
TANK CAN BE USED AS:
 HOLDING TANK

TANK: MIX DESIGN #9 (SMALL FIBER)

CUSTOMIZED TANKS:
 FOR CUSTOM TANKS CONTACT WIESER CONCRETE



TOP VIEW



SIDE VIEW

TANKS ARE MANUFACTURED TO MEET OR EXCEED ASTM C-1227 REQUIREMENTS

PRE-POUR:		DATE:	
SCALE: 1/4" = 1'-0"	REV.	REV.	REV.
DRAWN BY: WCP	DATE: 00/00/00	FILE: w5140 holding	
POST-POUR:			

WIESER CONCRETE

W3716 US HWY 10, MAIDEN ROCK, WI 54750
 800-325-8456

W5140 HOLDING
 SEPTIC MANUAL

REVIEWED BY _____
 REVIEW DATE _____

DRAWINGS SUBMITTED
FOR APPROVAL

APPROVED BY: _____
 APPROVAL DATE: _____
 PRODUCTS NEEDED BY: _____

SHEET NO.
 1 OF 1