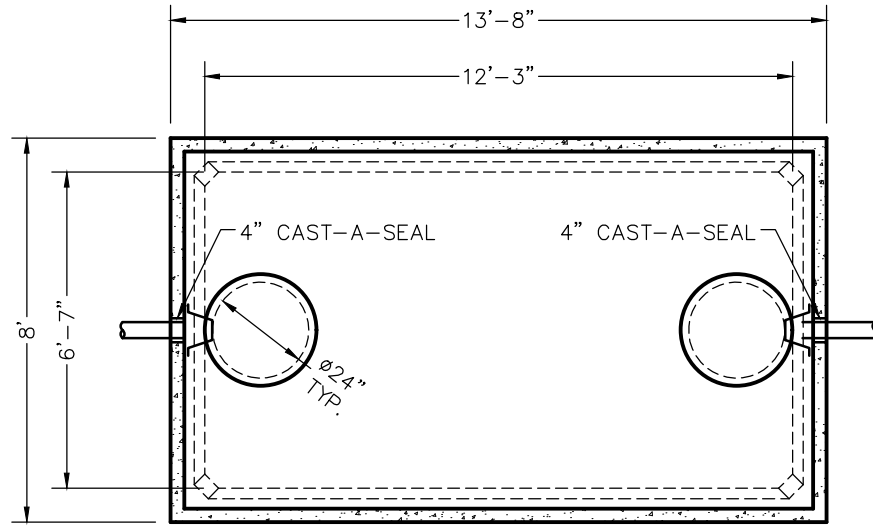
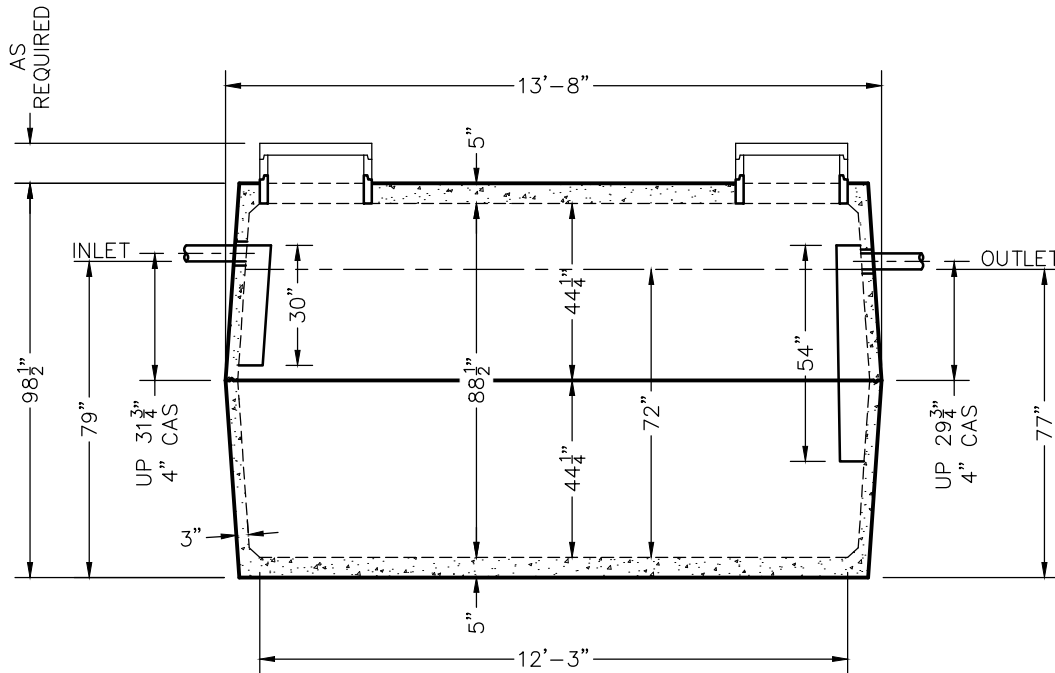


W4200 GREASE INTERCEPTOR TANK SPECIFICATIONS



TOP VIEW



SIDE VIEW

DIMENSIONS:

- WALL: 3"
- BOTTOM: 5"
- COVER: 5"
- MANHOLE: 24" I.D. PRECAST CONCRETE RISER
- HEIGHT: 98 1/2"
- LENGTH: 13'-8"
- WIDTH: 8'-0"
- BELOW INLET: 79"
- LIQUID LEVEL: 72"
- WEIGHT: 13,200 LBS. PER SECTION

INLET AND OUTLET:

4" CAST-A-SEAL BOOT OR EQUAL GASKET

INLET AND OUTLET BAFFLE AND FILTER:

AS SHOWN

LIQUID CAPACITY: 58.85 GAL/IN

LOADING DESIGN: 8'-0" UNSATURATED SOIL

TANK CAN BE USED AS:
GREASE INTERCEPTOR

TANK: MIX DESIGN #9 (SMALL FIBER)

CUSTOMIZED TANKS:
FOR CUSTOM TANKS CONTACT WIESER CONCRETE

PRE-POUR:		DATE:	
SCALE: 1/4" = 1'-0"	REV.	REV.	REV.
DRAWN BY: WCP	DATE: 00/00/00	POST-POUR:	
FILE: w4200gi			

WIESER CONCRETE

W3716 US HWY 10, MAIDEN ROCK, WI 54750
800-325-8456

W4200GI
SEPTIC MANUAL

SHEET NO.
1 OF 1

REVIEWED BY _____
REVIEW DATE _____

**DRAWINGS SUBMITTED
FOR APPROVAL**

APPROVED BY: _____
APPROVAL DATE: _____
PRODUCTS NEEDED BY: _____