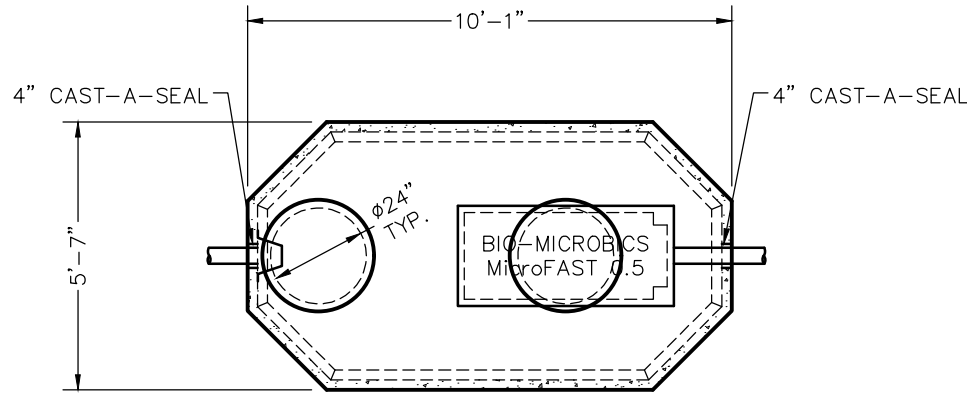
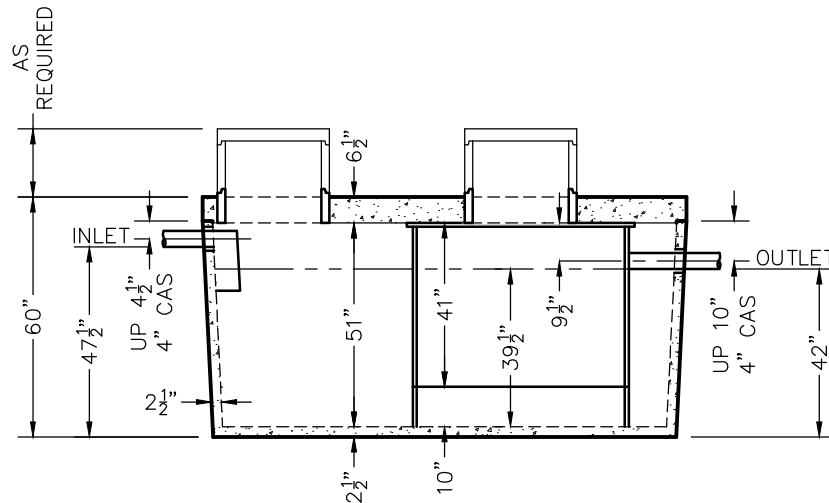


# W1000-P BIO MICROFAST® 0.5 TANK SPECIFICATIONS



TOP VIEW



SIDE VIEW

**DIMENSIONS:**

- WALL: 2 1/2"
- BOTTOM: 2 1/2"
- COVER: 6 1/2"
- MANHOLE: 24" I.D. PRECAST CONCRETE RISER
- HEIGHT: 60" O.D.
- LENGTH: 10'-1" O.D.
- WIDTH: 5'-7" O.D.
- BELOW INLET: 47 1/2" O.D.
- LIQUID LEVEL: 39 1/2"
- WEIGHT: BOTTOM 6,155 LBS.  
COVER 4,135 LBS.

**INLET AND OUTLET:**

4" CAST-A-SEAL BOOT OR EQUAL GASKET

**INLET BAFFLE:**

WISCONSIN, SEE DETAIL #10  
(OTHER STATES SEE CHART)

LIQUID CAPACITY: 26.00 GAL/IN

LOADING DESIGN: 8'-0" UNSATURATED SOIL

COVER: MIX DESIGN #8 (NO FIBER)  
TANK: MIX DESIGN #10 (STRUCTURAL FIBER)

**CUSTOMIZED TANKS:**

FOR CUSTOM TANKS CONTACT WIESER CONCRETE

PRE-POUR:	DATE:	REV.	SCALE: 1/4" = 1'-0"
POST-POUR:			DRAWN BY: WCP
			DATE: 00/00/00
			FILE: w1000-p bio microfast 500
<b>WIESER CONCRETE</b>			
w3716 US HWY 10, MAIDEN ROCK, WI 54750 800-325-8456			
W1000-P BIO MICROFAST 500		SEPTIC MANUAL	
DRAWINGS SUBMITTED FOR APPROVAL		SHEET NO. 1 OF 1	
APPROVED BY: _____		APPROVAL DATE: _____	
REVIEWED BY: _____		PRODUCTS NEEDED BY: _____	
REVIEW DATE: _____			