

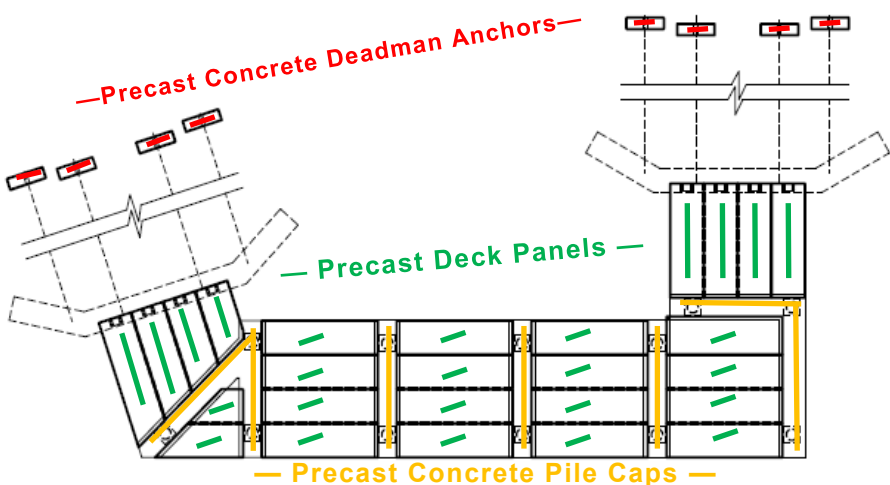


Go Fish

The Green Bay Shipyard Redevelopment Phase I Project was started to transform an area of Green Bay, WI into a destination for recreation and tourism. Public meetings, surveys, and strategic planning came together to create Phases I, II & III.

Phase I focused on the riverfront, floating dock, fishing pier and kayak launch. Wieser Concrete was the only precast concrete manufacturing company in the upper Midwest positioned to partner with McMullen & Pitz Construction on this unique project.

Wieser's Portage, WI plant manufactured the 88'6" x 36' Precast Concrete Fishing Pier, which included deck panels, deadman anchors, and pile caps.





The deadman earthen anchors are used to counteract the buoyant forces acting on the fishing pier. The precast pile caps provide speedy site installations for bridges and fixed-pier structures. The largest precast concrete piece for this structure was the L-shaped pier cap: 18' x 21'6" and 47,000 lbs.

Ted Jennejohn, Vice President of McMullen & Pitz Construction Co. said, "The City of Green Bay was very pleased with the precast products Wieser Concrete furnished to the project." Likewise, "McMullen & Pitz Construction Co. was extremely happy with the accuracy of the products we received from Wieser. Everything "fit like a glove."

Here's to another successful, custom project from Wieser. Go Fish!

SEE US AT THESE EVENTS:

**October 1-4 — World Dairy Expo
Booth 810 & 820 in Madison, WI**

October 19 — Precast Days —Maiden Rock and Portage, WI plants

**October 20-23 — NOWRA Mega Conf
Booth 711 In Spokane, WA**

October 25 — Precast Days —Roxana, IL plant