



HOOT SYSTEMS, LLC.
www.hootsystems.com

600 GPD GRAVITY DISCHARGE SYSTEM

H-600 A

**H-600 A
TANK SPECIFICATIONS**

DIMENSIONS:

- WALL: 3"
- BOTTOM: 3"
- COVER: 4"
- MANHOLE: 24" I.D. EZ SNAP RISER
- HEIGHT: 70" O.D.
- LENGTH: 8'-10" O.D.
- WIDTH: 6'-2 1/2" O.D.
- BELOW INLET: 57" O.D.
- LIQUID LEVEL: 51"
- WEIGHT: BOTTOM 8,395 LBS.
COVER 2,740 LBS.

INLET AND OUTLET:

4" CAST-A-SEAL BOOT OR EQUAL GASKET

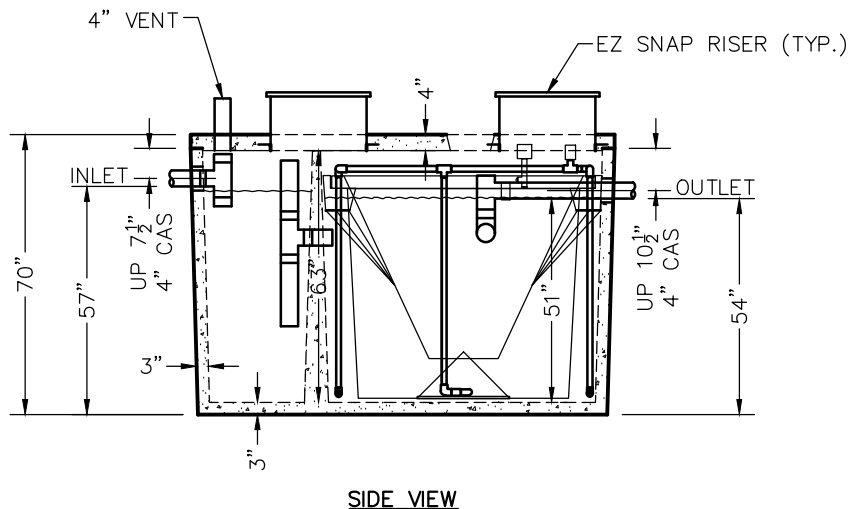
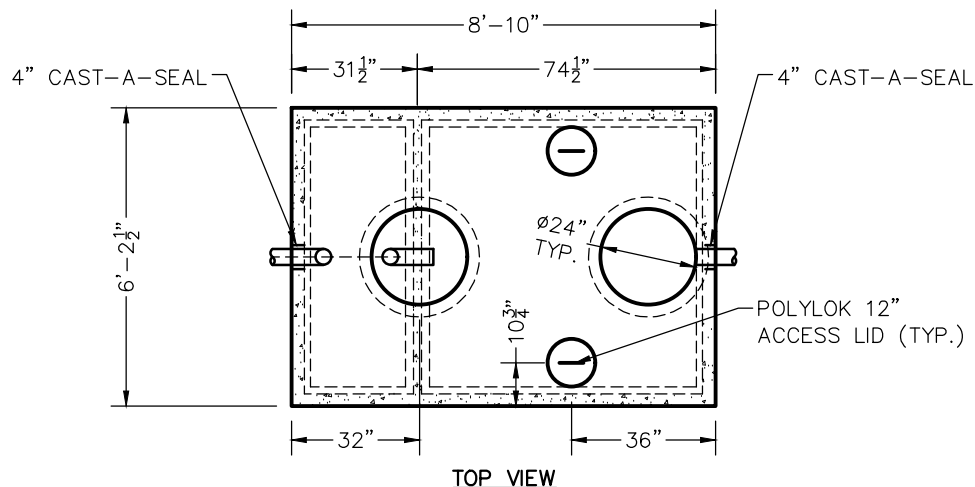
COVER: MIX DESIGN #8 (NO FIBER)

TANK: MIX DESIGN #9 (SMALL FIBER)

CUSTOMIZED TANKS:

FOR CUSTOM TANKS CONTACT WIESER CONCRETE

INCLUDE 12"X16"X3 1/2"
PUMP PAD FOR BLOWER
UNIT FOR EACH TANK



TANKS ARE MANUFACTURED TO MEET OR EXCEED ASTM C-1227 REQUIREMENTS

PRE-POUR:		DATE:		WIESER CONCRETE W3716 US HWY 10, MAIDEN ROCK, WI 54750 800-325-8456
REV.		REV.		
SCALE: 1/4" = 1'-0"	DRAWN BY: WCP	DATE: 00/00/00	FILE: h-600a	
H-600A SEPTIC MANUAL				
SHEET NO. 1 OF 1				

REVIEWED BY _____
REVIEW DATE _____

**DRAWINGS SUBMITTED
FOR APPROVAL**

APPROVED BY: _____
APPROVAL DATE: _____
PRODUCTS NEEDED BY: _____