



**HOOT SYSTEMS, LLC.**  
www.hootsystems.com

**500 GPD GRAVITY DISCHARGE SYSTEM  
H-500 A**

**H-500 A  
TANK SPECIFICATIONS**

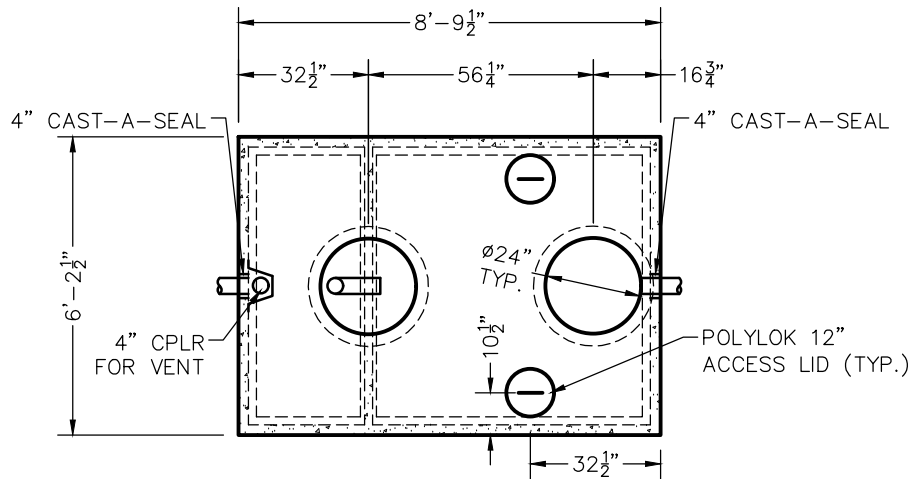
**DIMENSIONS:**  
 WALL: 3"  
 BOTTOM: 3"  
 COVER: 4"  
 MANHOLE: 24" I.D. PRECAST CONCRETE RISER  
 HEIGHT: 70" O.D.  
 LENGTH: 8'-9 1/2" O.D.  
 WIDTH: 6'-2 1/2" O.D.  
 BELOW INLET: 57" O.D.  
 LIQUID LEVEL: 51"  
 WEIGHT: BOTTOM 8,405 LBS.  
 COVER 2,730 LBS.

**INLET AND OUTLET:**  
 4" CAST-A-SEAL BOOT OR EQUAL GASKET

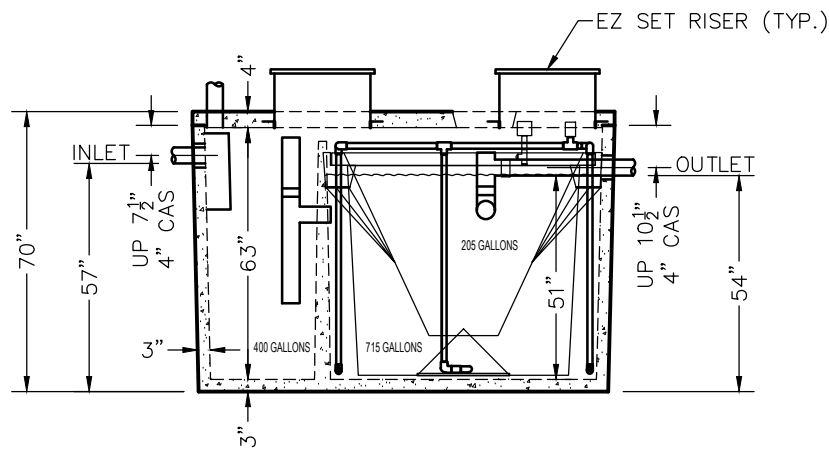
**COVER:** MIX DESIGN #8 (NO FIBER)  
**TANK:** MIX DESIGN #9 (SMALL FIBER)

**CUSTOMIZED TANKS:**  
 FOR CUSTOM TANKS CONTACT WIESER CONCRETE

INCLUDE 12"X16"X3 1/2"  
 PUMP PAD FOR BLOWER  
 UNIT FOR EACH TANK



**TOP VIEW**



**SIDE VIEW**

TANKS ARE MANUFACTURED TO MEET OR EXCEED ASTM C-1227 REQUIREMENTS

REVIEWED BY \_\_\_\_\_  
 REVIEW DATE \_\_\_\_\_

**DRAWINGS SUBMITTED  
 FOR APPROVAL**

APPROVED BY: \_\_\_\_\_  
 APPROVAL DATE: \_\_\_\_\_  
 PRODUCTS NEEDED BY: \_\_\_\_\_

PRE-POUR:		DATE:	
REV.	SCALE: 1/4" = 1'-0"	DRAWN BY: WCP	DATE: 00/00/00
POST-POUR:	FILE: h-500a	<b>WIESER CONCRETE</b> W3716 US HWY 10, MAIDEN ROCK, WI 54750 800-325-8456	
H-500A	SEPTIC MANUAL		
SHEET NO.	1 OF 1		