

ADVANTEK AX10 450 GPD OR
 ADVANTEK AX20 600 GPD
 W3000/1800
TANK SPECIFICATIONS

DIMENSIONS:
 WALL: 3"
 BOTTOM: 5"
 COVER: 5"
 MANHOLE: 24" I.D. PLASTIC RISER
 HEIGHT: 89 1/2" O.D.
 LENGTH: 15'-2 5/8" O.D.
 WIDTH: 8'-4 5/8" O.D.
 BELOW INLET: 78 1/2" O.D.
 LIQUID LEVEL: 71 1/2"
 WEIGHT: 14,350 LBS. PER SECTION

INLET AND OUTLET:
 4" CAST-A-SEAL BOOT OR EQUAL GASKET

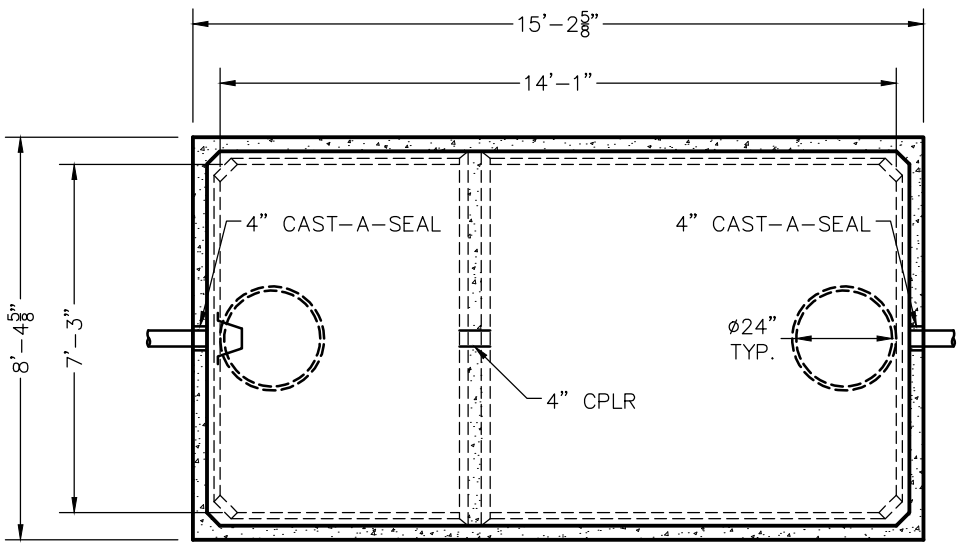
INLET AND OUTLET Baffle AND FILTER:
 WISCONSIN, SEE DETAIL #10
 (OTHER STATES SEE CHART)

LIQUID CAPACITY: 41.67 GAL/IN (SEPTIC)
 25.00 GAL/IN (PUMP)

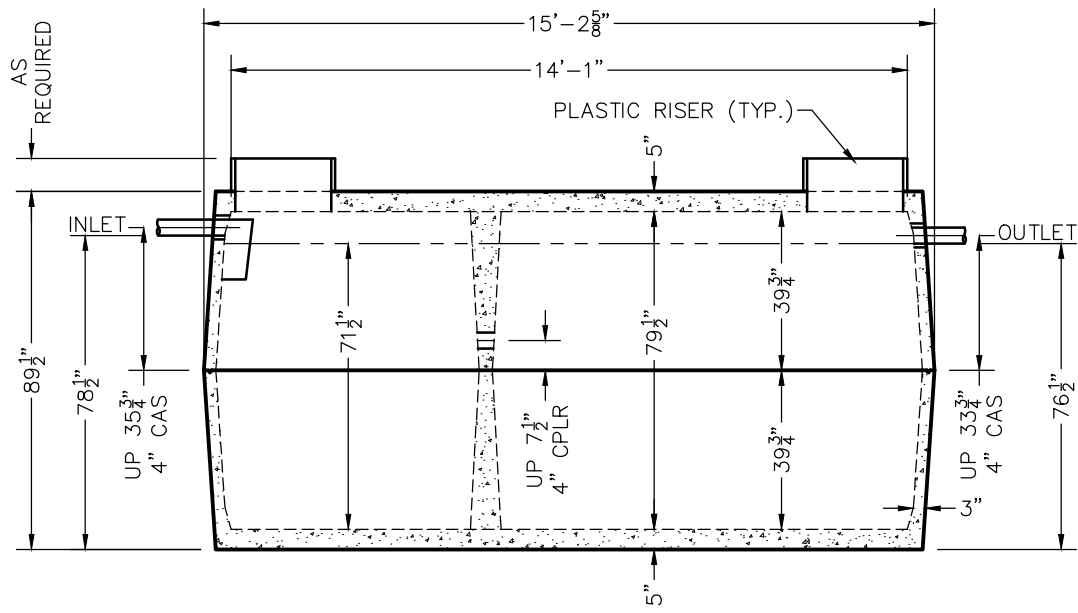
LOADING DESIGN: 8'-0" UNSATURATED SOIL

TANK: MIX DESIGN #9 (SMALL FIBER)

CUSTOMIZED TANKS:
 FOR CUSTOM TANKS CONTACT WIESER CONCRETE



TOP VIEW



SIDE VIEW

TANKS ARE MANUFACTURED TO MEET OR EXCEED ASTM C-1227 REQUIREMENTS

REVIEWED BY _____
 REVIEW DATE _____

**DRAWINGS SUBMITTED
 FOR APPROVAL**

APPROVED BY: _____
 APPROVAL DATE: _____
 PRODUCTS NEEDED BY: _____

PRE-POUR:	DATE:
POST-POUR:	REV.
SCALE: 1/4" = 1'-0"	DRAWN BY: WCP
	DATE: 00/00/00
FILE: advantex w3000-1800	
WIESER CONCRETE	
W3716 US HWY 10, MAIDEN ROCK, WI 54750 800-325-8456	
ADVANTEK W3000-1800	SEPTIC MANUAL
SHEET NO.	1 OF 1