

# WIESER CONCRETE

## PAN-L-BILT UNDERBARN MANURE STORAGE SYSTEMS

### FOR BEEF ENTERPRISES

- Economical
- Fast, Efficient Installation
- Less Square Footage Required per Animal
- Clean, Dry and More Comfortable Animals
- No investment in expensive mechanical collection equipment
- No machinery maintenance problems
- No daily labor required for operation of equipment



- No electric power needed; saves energy
- Underbarn storage saves valuable farmstead land
- Maximum nutrient value of manure is saved.
- Pit system serves as floor and foundation of building.

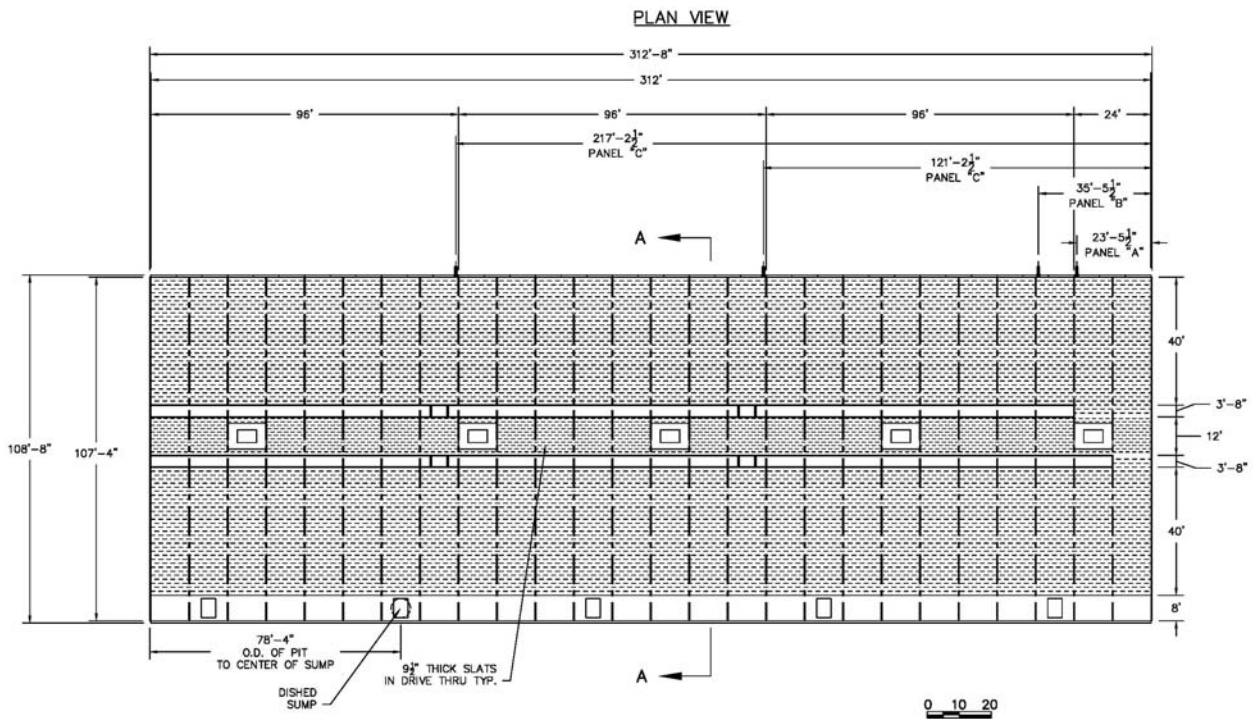


***Proven Performance From The Industry Leader***

Completed Facility



Completed Pan-L-Bilt Structure



**WIESER** CONCRETE

**800-325-8456**

Visit Us on the Web: [wieserconcrete.com](http://wieserconcrete.com)