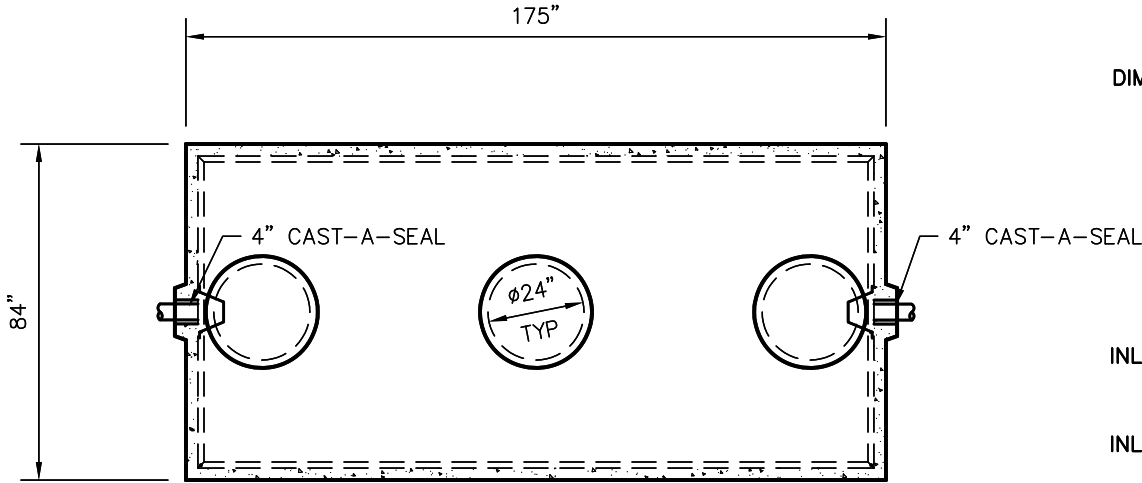
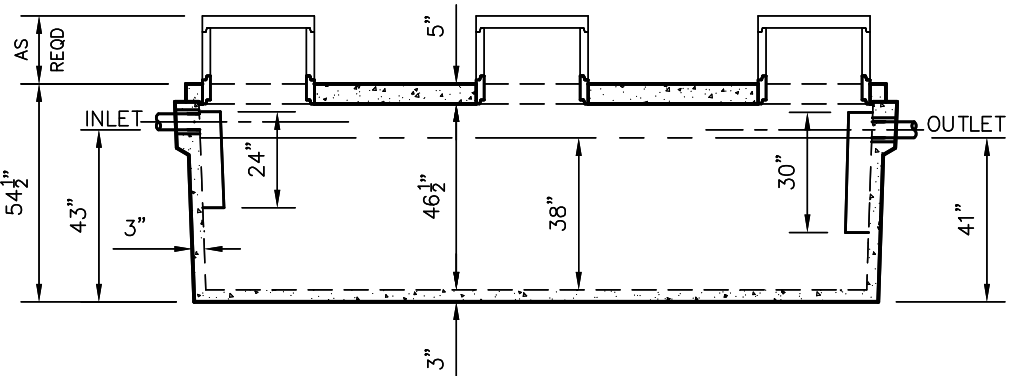


WLP2000-FDL GREASE INTERCEPTOR TANK SPECIFICATIONS



TOP VIEW



SIDE VIEW

DIMENSIONS:
 WALL: 3"
 BOTTOM: 3"
 COVER: 5"
 MANHOLE: 24" I.D. PRECAST CONCRETE RISER
 HEIGHT: 54-1/2" O.D.
 LENGTH: 175" O.D.
 WIDTH: 84" O.D.
 BELOW INLET: 43" O.D.
 LIQUID LEVEL: 38"
 WEIGHT: 17,070 LBS.

INLET AND OUTLET:
 4" CAST-A-SEAL BOOT OR EQUAL
 GASKET, CAST-A-SEAL BOOT OR EQUAL

INLET AND OUTLET BAFFLES:
 AS SHOWN

LIQUID CAPACITY: 52.63 GAL/IN

LOADING DESIGN: 8' 0" UNSATURATED SOIL

TANK CAN BE USED AS:
 GREASE INTERCEPTOR

COVER: MIX DESIGN #8 (NO FIBER)
 TANK: MIX DESIGN #9 (SMALL FIBER)

CUSTOMIZED TANKS:
 FOR CUSTOM TANKS CONTACT WIESER CONCRETE

PRE-FOUR:		SCALE: 1/4"=1'-0"	
DRAWN BY: WCP	REV:	DATE:	POST-POUR:
DATE: 00/00/00	FILE: WLP2000G-FDL		

WIESER CONCRETE
 W5716 US HWY 10 MAIDEN ROCK, WI 54750
 800-325-8456

WLP2000G-FDL
 SEPTIC MANUAL

SHEET NO.
 1 OF 1

**DRAWINGS SUBMITTED
 FOR APPROVAL**

APPROVED BY: _____
 APPROVAL DATE: _____
 PRODUCTS NEEDED BY: _____

TANKS ARE MANUFACTURED TO MEET OR EXCEED ASTM C-1227 REQUIREMENTS