

W950/475/900-P BIO 500 GPD MICROFAST® 0.5 TANK SPECIFICATIONS

DIMENSIONS:

WALL: 3"
 BOTTOM: 3"
 COVER: 5"
 MANHOLE: 24" I.D. PRECAST CONCRETE RISER
 HEIGHT: 76" O.D.
 LENGTH: 145 3/8" O.D.
 WIDTH: 79 1/4" O.D.
 BELOW INLET: 65" O.D.
 LIQUID LEVEL: 60" (SEPTIC)
 WEIGHT: 20,095 LBS.

INLET AND OUTLET:
 4" CAST-A-SEAL (CAS) BOOT OR EQUAL

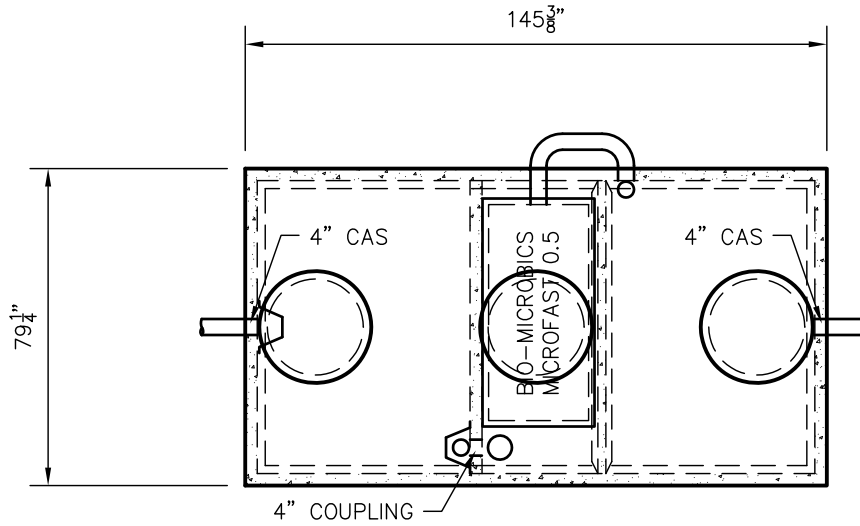
INLET AND OUTLET Baffle:
 AS SHOWN

LIQUID CAPACITY: 16.03 GAL/IN (SEPTIC)
 8.55 GAL/IN (BIO)
 15.43 GAL/IN (PUMP)

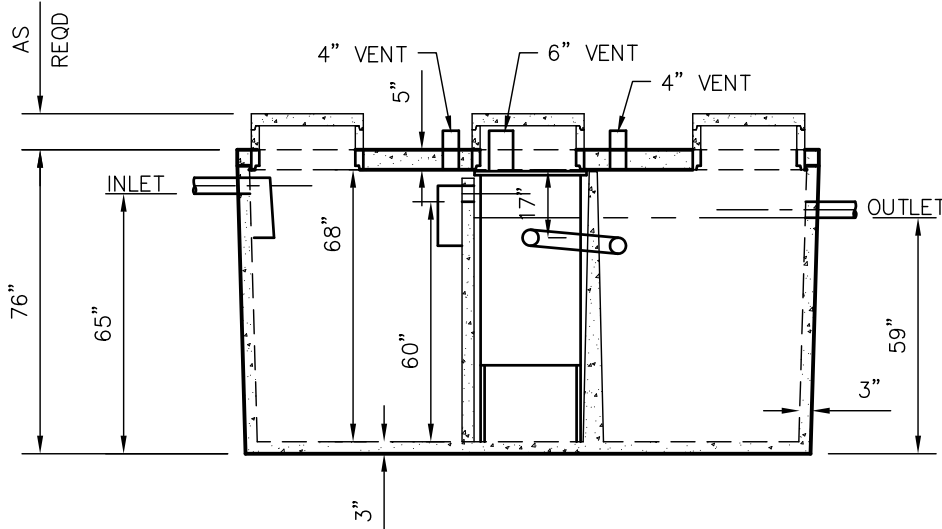
LOADING DESIGN: 8' 0" UNSATURATED SOIL

COVER: MIX DESIGN #8 (NO FIBER)
 TANK: MIX DESIGN #9 (SMALL FIBER)

CUSTOMIZED TANKS:
 FOR CUSTOM TANKS CONTACT WIESER CONCRETE



TOP VIEW



SIDE VIEW

TANKS ARE MANUFACTURED TO MEET OR EXCEED ASTM C-1227 REQUIREMENTS

**DRAWINGS SUBMITTED
FOR APPROVAL**

APPROVED BY: _____
 APPROVAL DATE: _____
 PRODUCTS NEEDED BY: _____

SHEET NO.

1 OF

W950/475/900-P BIO
 500 GPD
 SEPTIC MANUAL

WIESER CONCRETE

W3716 US HWY 10 MAIDEN ROCK, WI 54750
 800-325-8456

DRAWN BY: WCP
 DATE: 00/00/00

SCALE: 1/4"=1'-0"
 REV. DATE:

PRE-POUR:
 POST-POUR:

FILE: W950-475-900-P BIO MICROFAST 500