

W600/800/900-P BIO 900 GPD
 MICROFAST® 0.9
 TANK SPECIFICATIONS

DIMENSIONS:

WALL: 3"
 BOTTOM: 3"
 COVER: 5"
 MANHOLE: 24" I.D. PRECAST CONCRETE RISER
 HEIGHT: 76" O.D.
 LENGTH: 145 3/8" O.D.
 WIDTH: 79 1/4" O.D.
 BELOW INLET: 65" O.D.
 LIQUID LEVEL: 60" (SEPTIC)
 WEIGHT: 20,095 LBS.

INLET AND OUTLET:
 4" CAST-A-SEAL (CAS) BOOT OR EQUAL

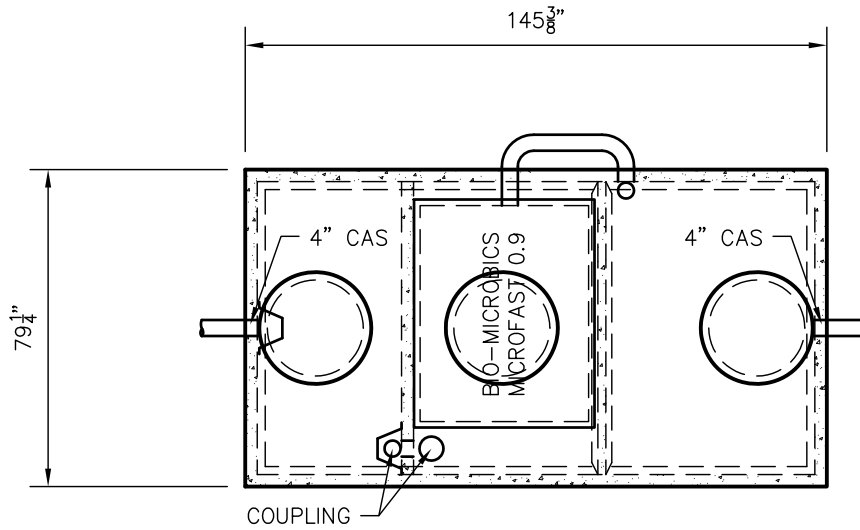
INLET AND OUTLET BAFFLE:
 AS SHOWN

LIQUID CAPACITY: 10.79 GAL/IN (SEPTIC)
 13.79 GAL/IN (BIO)
 15.43 GAL/IN (PUMP)

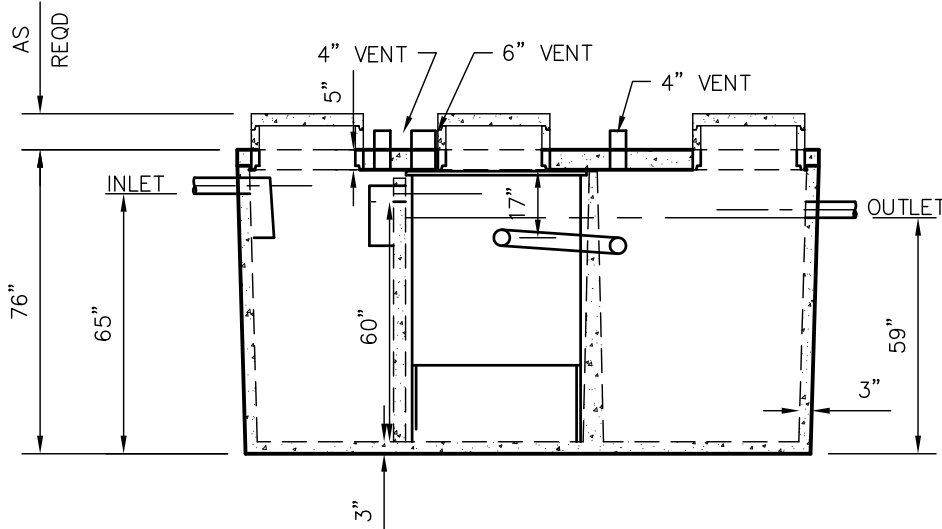
LOADING DESIGN: 8' 0" UNSATURATED SOIL

COVER: MIX DESIGN #8 (NO FIBER)
 TANK: MIX DESIGN #9 (SMALL FIBER)

CUSTOMIZED TANKS:
 FOR CUSTOM TANKS CONTACT WIESER CONCRETE



TOP VIEW



SIDE VIEW

TANKS ARE MANUFACTURED TO MEET OR EXCEED ASTM C-1227 REQUIREMENTS

DRAWINGS SUBMITTED
 FOR APPROVAL

APPROVED BY: _____
 APPROVAL DATE: _____
 PRODUCTS NEEDED BY: _____

PRE-POUR:	SCALE: 1/4"=1'-0"
POST-POUR:	REV. DATE:
DRAWN BY: WCP	DATE: 00/00/00

WIESER CONCRETE
 W3716 US HWY 10 MAIDEN ROCK, WI 54750
 800-325-8456

W600/800/900-P BIO
 900 GPD
 SEPTIC MANUAL

SHEET NO.
 1 OF 1

FILE: W600/800/900-P BIO MICROFAST 900