

W1648/822 NIBBLER TANK SPECIFICATIONS

DIMENSIONS:

WALL: 3"
 BOTTOM: 3"
 COVER: 5"
 MANHOLE: 24" I.D. PRECAST CONCRETE RISER
 HEIGHT: 76" O.D.
 LENGTH: 145 3/8" O.D.
 WIDTH: 79 1/4" O.D.
 BELOW INLET: 65" O.D.
 LIQUID LEVEL: 60"
 WEIGHT: 20,095 LBS.

INLET AND OUTLET:
 3" & 4" CAST-A-SEAL (CAS) BOOT OR EQUAL

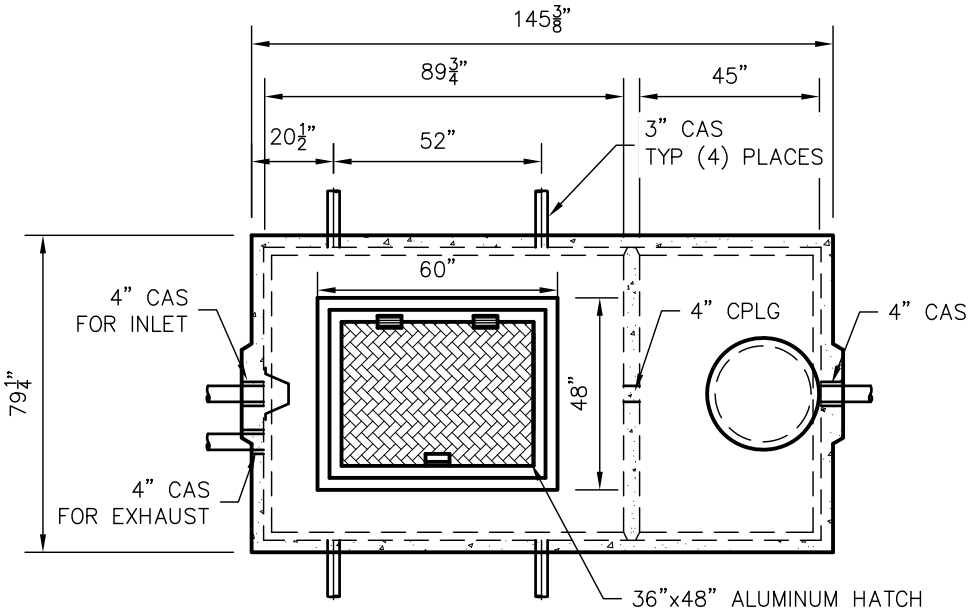
LIQUID CAPACITY: 27.47 GAL/IN (SEPTIC)
 13.70 GAL/IN (PUMP)

LOADING DESIGN: 8' 0" UNSATURATED SOIL

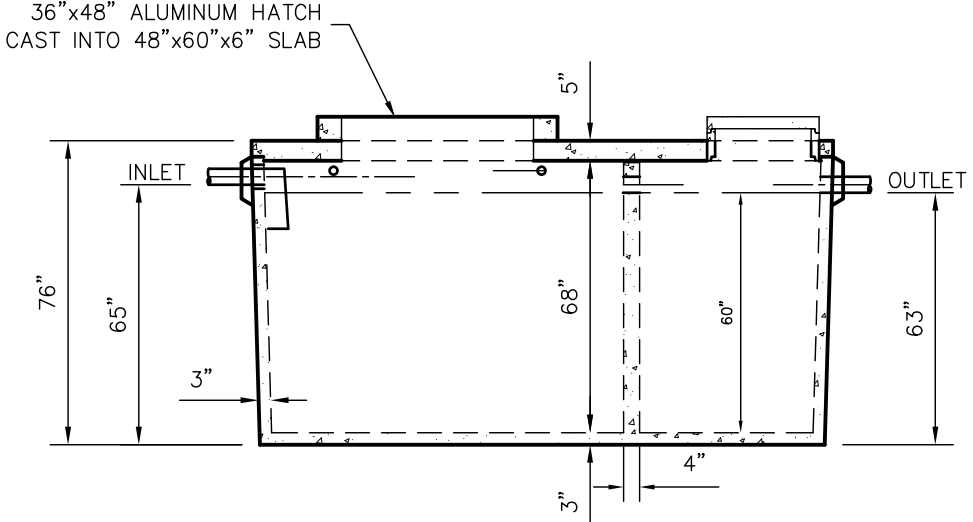
TANK CAN BE USED AS:
 NIBBLER

COVER: MIX DESIGN #8 (NO FIBER)
TANK: MIX DESIGN #9 (SMALL FIBER)

CUSTOMIZED TANKS:
 FOR CUSTOM TANKS CONTACT WIESER CONCRETE



TOP VIEW



SIDE VIEW

TANKS ARE MANUFACTURED TO MEET OR EXCEED ASTM C-1227 REQUIREMENTS

SCALE: 1/4"=1'-0"	PRE-POUR:
REV: JWZ	POST-POUR:
DATE: 00/00/00	DATE: 12-22-14
DRAWN BY: WCP	FILE: W1648/822 NIBBLER

WIESER CONCRETE
 W3716 US HWY 10 MAIDEN ROCK, WI 54750
 800-325-8456

W1648/822 NIBBLER
 SEPTIC MANUAL

DRAWINGS SUBMITTED FOR APPROVAL

APPROVED BY: _____
 APPROVAL DATE: _____
 PRODUCTS NEEDED BY: _____

SHEET NO.
 1 OF 1