



**HOOT SYSTEMS, LLC.**  
www.hootsystems.com

1000 GPD DRIP SYSTEM  
H-1000 A

## H-1000 DRIP SYSTEM TANK SPECIFICATIONS

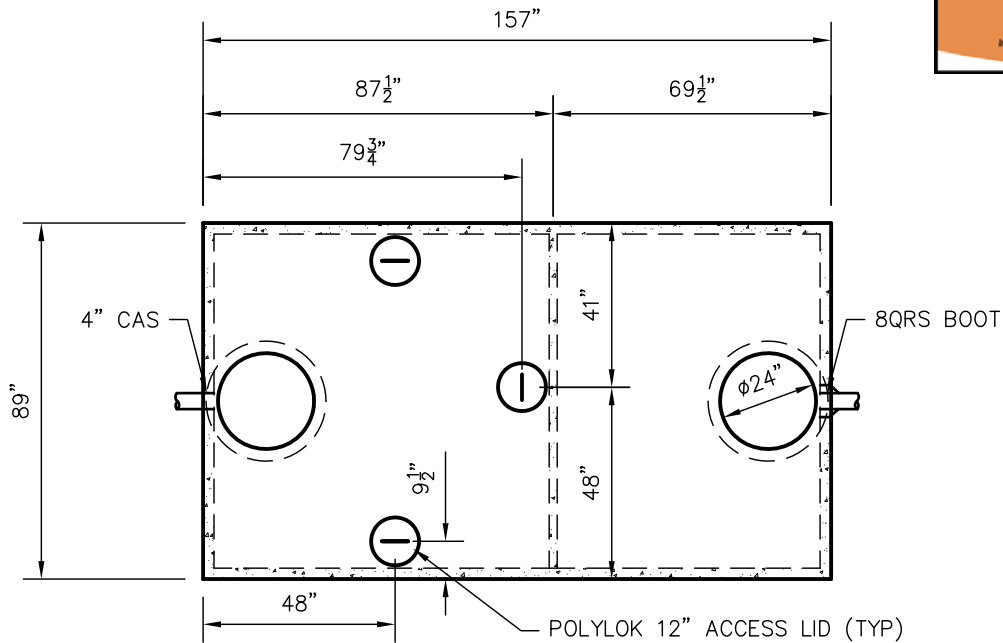
**DIMENSIONS:**

- WALL: 2 1/2"
- BOTTOM: 2 1/4"
- COVER: 5"
- MANHOLE: 12" & 24" I.D. PLASTIC RISER
- HEIGHT: 80 1/4" O.D.
- LENGTH 157" O.D.
- WIDTH: 89" O.D.
- BELOW INLET: 70" O.D.

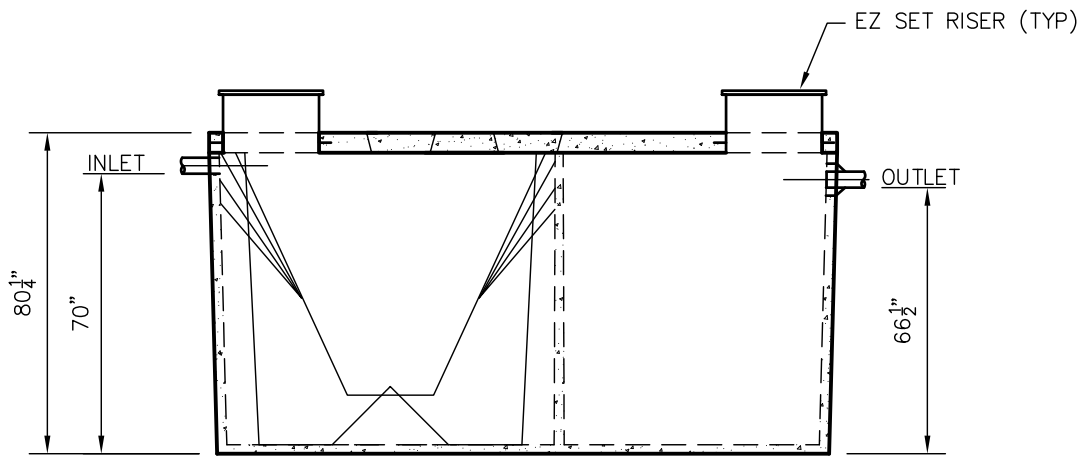
**INLET AND OUTLET:**  
4" CAST-A-SEAL BOOT OR EQUAL  
8QRS BOOT OR EQUAL

**COVER:** MIX DESIGN #8 (NO FIBER)  
**TANK:** MIX DESIGN #9 (SMALL FIBER)

**CUSTOMIZED TANKS:**  
FOR CUSTOM TANKS CONTACT WIESER CONCRETE



TOP VIEW



SIDE VIEW

TANKS ARE MANUFACTURED TO MEET OR EXCEED ASTM C-1227 REQUIREMENTS

**DRAWINGS SUBMITTED  
FOR APPROVAL**

APPROVED BY: \_\_\_\_\_  
APPROVAL DATE: \_\_\_\_\_  
PRODUCTS NEEDED BY: \_\_\_\_\_

PRE-POUR:  
POST-POUR:

SCALE: 1/4" = 1'-0"  
REV. \_\_\_\_\_  
DATE: \_\_\_\_\_

DRAWN BY: WCP  
DATE: 00/00/00  
FILE: H-1000A

**WIESER CONCRETE**  
W3716 US HWY 10 MAIDEN ROCK, WI 54750  
800-325-8456

H-1000 A 1000 GPD  
DRIP SYSTEM H-1000  
SEPTIC MANUAL

SHEET NO.  
1 OF 1