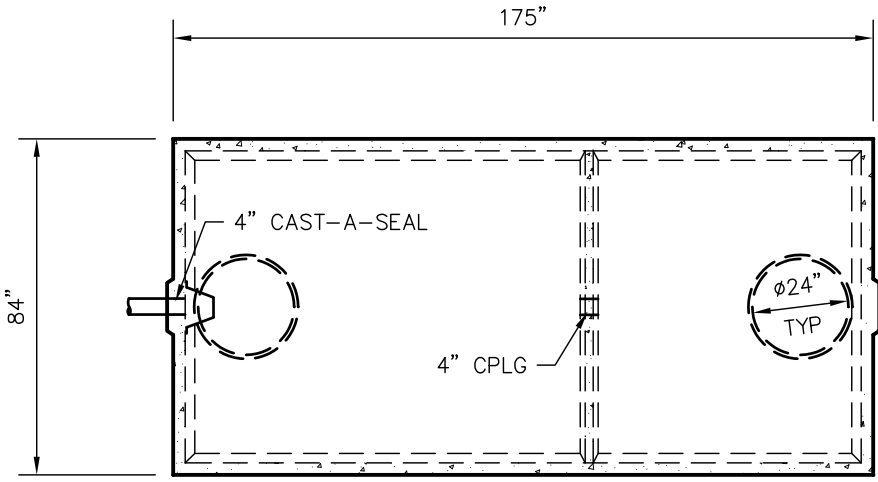
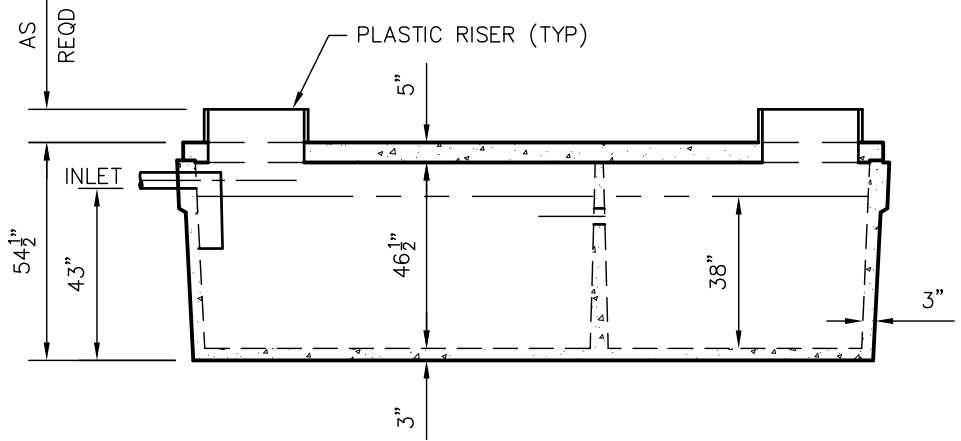


ADVANTEK AX10 OR 20
 450 OR 900 GPD
 WLP1280 800-FDL
TANK SPECIFICATIONS



TOP VIEW



SIDE VIEW

TANKS ARE MANUFACTURED TO MEET OR EXCEED ASTM C-1227 REQUIREMENTS

DIMENSIONS:
 WALL: 3"
 BOTTOM: 3"
 COVER: 5"
 MANHOLE: 24" I.D. PRECAST CONCRETE RISER
 HEIGHT: 54 1/2" O.D.
 LENGTH: 175" O.D.
 WIDTH: 84" O.D.
 BELOW INLET: 43" O.D.
 LIQUID LEVEL: 38"
 WEIGHT: 18,000 LBS.

INLET:
 4" CAST-A-SEAL BOOT OR EQUAL

INLET Baffle AND FILTER:
 WISCONSIN, SEE DETAIL #10

LIQUID CAPACITY: 33.44 GAL/IN (SEPTIC)
 20.60 GAL/IN (PUMP)

LOADING DESIGN: 8' 0" UNSATURATED SOIL

OPTIONAL CONCRETE RISERS AND LIDS

TANK CAN BE USED AS:
 ADVANTEK AX10 OR 20, 450 OR 900 GPD

COVER: MIX DESIGN #8 (NO FIBER)
 TANK: MIX DESIGN #9 (SMALL FIBER)

CUSTOMIZED TANKS:
 FOR CUSTOM TANKS CONTACT WIESER CONCRETE

DRAWINGS SUBMITTED FOR APPROVAL

APPROVED BY: _____
 APPROVAL DATE: _____
 PRODUCTS NEEDED BY: _____

PRE-POUR:	SCALE: 1/4"=1'-0"
POST-POUR:	REV. DATE:
DRAWN BY: WCP	DATE: 00/00/00
FILE: ADVANTEK WLP1280/800-FDL	
WIESER CONCRETE	
W3716 US HWY 10 MAIDEN ROCK, WI 54750	
800-325-8456	
ADVANTEK AX10 OR 20 WLP1280/800-FDL	SEPTIC MANUAL
SHEET NO. 1 OF 1	