

ADVANTEK AX10 450 GPD
 WLP1000/650-FDL
 TANK SPECIFICATIONS

DIMENSIONS:
 WALL: 3"
 BOTTOM: 3"
 COVER: 5"
 MANHOLE: 24" I.D. PRECAST CONCRETE RISER
 HEIGHT: 57" O.D.
 LENGTH: 160" O.D.
 WIDTH: 72" O.D.
 BELOW INLET: 46" O.D.
 LIQUID LEVEL: 41"
 WEIGHT: 15,000 LBS.

INLET:
 4" CAST-A-SEAL BOOT OR EQUAL

INLET Baffle and Filter:
 WISCONSIN, SEE DETAIL #10

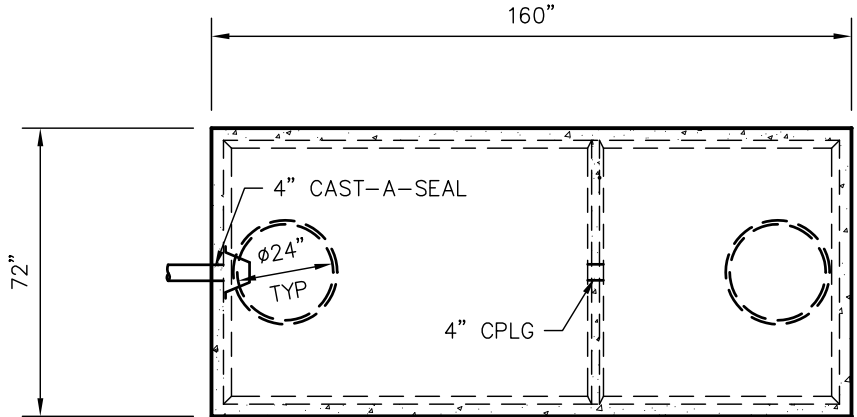
LIQUID CAPACITY: 24.74 GAL/IN (SEPTIC)
 15.94 GAL/IN (PUMP)

LOADING DESIGN: 8' 0" UNSATURATED SOIL
 OPTIONAL CONCRETE RISERS AND LIDS

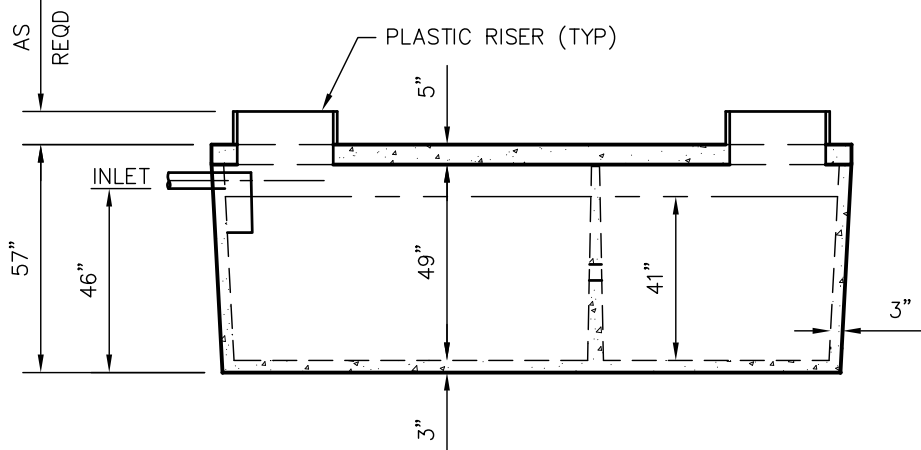
TANK CAN BE USED AS:
 ADVANTEK AX 10 450 GPD

COVER: MIX DESIGN #8 (NO FIBER)
 TANK: MIX DESIGN #9 (SMALL FIBER)

CUSTOMIZED TANKS:
 FOR CUSTOM TANKS CONTACT WIESER CONCRETE



TOP VIEW



SIDE VIEW

TANKS ARE MANUFACTURED TO MEET OR EXCEED ASTM C-1227 REQUIREMENTS

DRAWINGS SUBMITTED FOR APPROVAL
 APPROVED BY: _____
 APPROVAL DATE: _____
 PRODUCTS NEEDED BY: _____

PRE-POUR:	SCALE: 1/4"=1'-0"
POST-POUR:	REV. DATE:
DRAWN BY: WCP	DATE: 00/00/00
FILE: ADVANTEK WLP1000/650-FDL	
WIESER CONCRETE	
W3716 US HWY 10 MAIDEN ROCK, WI 54750	
800-325-8456	
ADVANTEK AX10 450 GPD	SEPTIC MANUAL
WLP1000/650-FDL	
SHEET NO.	1 OF 1